

# CTI ENVIRONMENTAL, INC.

Your Environmental & Demolition Needs all in One

8(a) Women Owned Business

CTI Environmental, Inc. (CTI) is a General Engineering Contractor specializing in environmental and safety services within the Construction Industry, with a mission to help clients reduce risk and minimizing liability on Civil Construction, Engineering Construction projects and spill cleanups. We are an 8(a) Disadvantaged, Minority Owned Woman business.



Knowledge and Experience is our strength. By combining our knowledge and experience with our Mentor, Thomas Land Clearing Company, we have proven capabilities of completing Demolition, Asbestos Abatement, Lead Paint Removal, Design Build and follow on Construction projects.

It is our intent to complete demolition and environmental related services at a high level of quality and safety, allowing us to reduce costs and deliver projects on time.

#### **The primary industry of the 8(a) WOB CTI Environmental, Inc.:**

CTI Environmental specializes in Environmental Consulting Services for construction activities (**NAICS 541620**).

#### **Brief History of the 8(a) Firm:**

CTI Environmental, Inc. (CTI) Company has been providing regulatory compliance and implementing environmental, health and safety programs as well as Demolition, Construction and Development Services. The company has over 18 years of safe and efficient expertise in each of these areas.

CTI Environmental Inc. successfully completed projects for Kiewit Pacific, City of Los Angeles, Granite Construction and Southern California Edison.

CTI Environmental Inc., was awarded a \$4 Million Dollar contract with the City of Los Angeles providing Emergency Services for Response and Recovery Operations during Catastrophic Incidents which includes Debris Removal & Disposal, Back up Generators, food, water, shelter, Heavy Equipment and Operators.

#### **Other NAICS codes:**

541330,562910,926150,488510

Class A, Haz. License

#### **The primary industry of the Mentor Thomas Land Clearing Company:**

Thomas Land Clearing Company specializes in demolition and site preparation construction contractor activities (**NAICS 238910**).

#### **Brief History of the Mentor:**

Thomas Land Clearing (TLC) Company has been providing demolition, asbestos abatement, lead paint removal and mold abatement since 1987. The company has over 25 years of safe and efficient expertise in each of these areas.

Thomas Land Clearing Company has successfully completed projects for various Federal Agencies which include:

Department of Veteran Affairs, Los Angeles Air Force Base, Edwards Air Force Base, March Air Force Base, U.S. Navy, U.S. Department of Labor, U.S. Coast Guard, 29 Palms, Miramar and Marine Corps Recruit Depot

#### **Other NAICS codes:**

115310,212321,236210,236220,237310,237990,238190,238910,238990,561730,562119,562910

Class C21, B, ASB License

"ACHIEVING SUSTAINABILITY THROUGH REGULATORY COMPLIANCE"



**DUNS NO: 831234088**  
**CAGE CODE: 61DK5**

## **PROJECT EXPERIENCE**

**I-405 Improvement Project** – Provided Construction and Management Program activities including scheduling for over 20,000 tasks, coordinated and provided support for utility relocation as part of a \$1.2 Billion Orange County Transportation Authority Project.

### **Kiewit Infrastructure Group - I-405 Sepulveda Widening Project**

Transport and disposed of approx. 25,000 cubic yards of aerial deposited lead contaminated soil. Negotiated disposal fees, inspections, provided trucks and project manager on site for duration of project. Installed bird exclusionary devices on bridges to prevent birds from entering construction zone.

### **International City Bank - Phase II Assessment**

Subsurface soil sampling at levels of 20', 10' and 5' to determine levels of soil contamination at former gas station site. CTI obtained a 'no further action' determination from the Long Beach Environmental Dept. so that tenant improvements could continue at the property and process could be closed out.

**Clean Up America** — SWPPP Development Developed SWPPP for recycle and demolition facility located in the City of Los Angeles. Provided additional consulting services including disposal of rainwater accumulated onsite and re-view of existing compliance documents. Coordinated rainwater disposal from

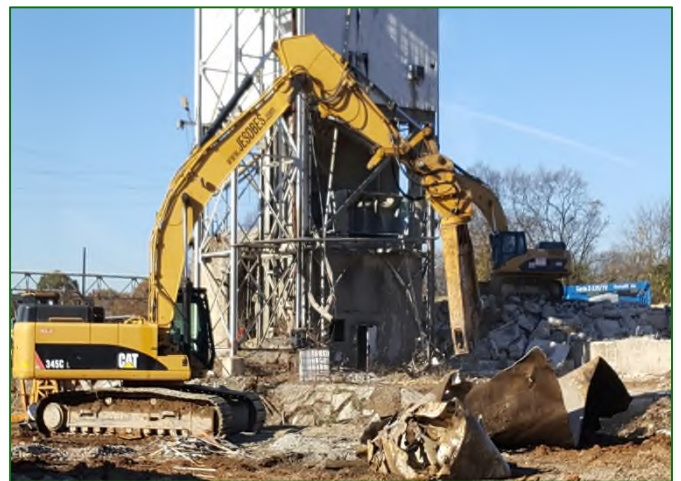
## **OTHER PROJECTS\***

**DEPARTMENT OF THE NAVY**– Demolition of Marine Palms Housing, 29 Palms, CA.

**DEPARTMENT OF VETERAN AFFAIRS**– Design Build Demo of Building 122, Temporary Passageways and Site Work, Long Beach, CA.

**U.S. ARMY CORPS OF ENGINEERS**– Demolition of Horseshoe Bridge and Channel Improvements, Los Angeles River, Long Beach, CA.

**GRANITE CONSTRUCTION** – Demolition of Concrete Batch Plant, Birmingham, Alabama



**Office Address:** 4401 Atlantic Ave, Suite 200 Long Beach, Ca. 90807

### **Primary POC:**

Bernice Antimo

Phone: (562) 572-6118

Email: [tlc.demo@verizon.net](mailto:tlc.demo@verizon.net)

Website: [www.jesdbes.com](http://www.jesdbes.com)

### **Alternate POC:**

Robin Thorne

Email : [robin@ctienviro.com](mailto:robin@ctienviro.com)

website: [www.ctienviro.com](http://www.ctienviro.com)